

BULLETIN 2

WU23SOC/WMSOC/WCup1 – 2026

21-25 January – Batak-BULGARIA

ORGANISERS

BULGARIAN ORIENTEERING FEDERATION
ORIENTEERING CLUB "NSA SIVEN"



Event director

Todor Pedev

Course setter

Georgi Hadzhimitev

Event secretary

Ilian Todorov

Contacts:

E-mail: ski-o2026@abv.bg

Phone: +359 887568353

EVENT CONTROLLERS

IOF Senior Event Adviser

Markku Vauhkonen (FIN)

IOF Assistant Event Adviser

Veysel Guler (TUR)

National Controller

Petar Doganov

VENUE – Batak

Batak is a town in Pazardzhik Province, southern Bulgaria, situated at 33 km to the south of the regional centre Pazardzhik. It is the administrative centre of the homonymous Batak Municipality. Batak is situated in the northwestern slopes of the Rhodope Mountains, at 1036 m above sea level. It is surrounded by many peaks, clad with century-old pine and spruce forests. The climate is temperate continental with a characteristic southern warm wind. Ninety percent of the municipal area is covered with thick forests.

BULLETIN 2

WU23SOC/WMSOC/WCup1 – 2026

21-25 January – Batak-BULGARIA

PROGRAM

	WCUP 1/WU23SOC/WMSOC
January 21 Wednesday	Arrival
January 22 Thursday	Model Event
January 23 Friday	Sprint
January 24 Saturday	Middle distance
January 25 Sunday	Long distance

CLASSES AND PARTICIPATION RESTRICTIONS:

WCUP (M/W 21)

Each Federation may enter up to 6 women and 6 men in each individual competition.

WU23SOC

In addition, each Federation may enter up to a further 2 women and 2 men, who qualify for the Women U23 and Men U23 classes respectively.

WMSOC (M/W 35, 40, 45, 50, 55, 60, 65, 70, 75, 80, 85):

Open for everybody, the class depends on age.

Sprint distance: Single race event with random start order.

Middle distance: Single race event with random start order.

Long distance: Single race event with random start order.

ENTRIES

Preliminary entries:

Deadline for preliminary number of competitors and team officials is **10 December 2025** (online entry via IOF Eventor).

Final entries:

Deadline for final entries with names of the competitors and team officials is **10 January 2026** (online entry via IOF Eventor).

ENTRY FEES

Fee type	Fee in EUR per competitor – World Cup	
	Regular entry until 10.12.2025 and payment until 31.12.2025	Late entry until 01.1.2026 and payment until 15.01.2026
Accreditation fee (including model event)	60	70
Accreditation fee for team officials	60	70
Entry fee Sprint	70	105
Entry fee Middle distance	70	105
Entry fee Long distance	70	105
Participation fee for banquet	40	40
Fee for one training map	5	5

Deadline for entries payment: **31 December 2025**

After **31 December 2025** – 20% interest

BULLETIN 2

WU23SOC/WMSOC/WCup1 – 2026

21-25 January – Batak-BULGARIA

Fee type (Entry fees must include possible obligatory transportation)	Fee in EUR per competitor – WMSOC		
	Early bird entry including payment until 24.11. 2025	Regular entry including payment until 24.12. 2025	Late entry including payment until 14.01. 2026
Accreditation fee (including model event)	60	60	70
Entry fee Sprint	20	30	40
Entry fee Middle distance	20	30	40
Entry fee Long distance	20	30	40
Participation fee for banquet	40	40	40
Fee for one training map	5	5	5

ACCOMMODATION and EVENT CENTRE

HOTEL PARADISE – 41.945542, 24.153330

The deadline for booking accommodation and 50% deposit is on 10.12.2025 using the e-mail address: ski-o2026@abv.bg

Accommodation level	Type (Hotel, Hostel, etc.)	Place	Price
A Single rooms	3-star Hotel	PARADISE	110 EUR – half board per night per person
B Double rooms and studios	3-star Hotel	PARADISE	65 EUR – half board per night per person

- **Breakfast includes** – traditional Bulgarian breakfast, continental breakfast, fruits, and beverages / coffee, tea, water, juice, fresh milk, and ayran /.
- **Dinner includes** – 6 types of salads; appetizers – fish, hot starters, pasta, pizza, bruschetta, cheeses;
- **Main courses** – chicken, pork, beef, or lamb dishes, and always a vegetarian option.
- **Side dishes** – three to four types.
- **Desserts** – homemade desserts and fruits.

You can use the hotel's **SPA center completely free of charge**, where the following facilities are at your disposal:

- Indoor swimming pool with a temperature of 30–32°C;
- Dry sauna;
- Turkish bath;
- Steam bath;
- Relaxation area.

The rooms will be provided with bathrobes and slippers for use in the SPA center.

BULLETIN 2

WU23SOC/WMSOC/WCup1 – 2026

21-25 January – Batak-BULGARIA

- ☒ Free internet access throughout the entire hotel.
- ☒ The hotel offers free parking.
- ☒ Possibility for bus parking.

Paid Services

- Various types of massages offered in the SPA center;
- Salt room;
- Jacuzzi for two;
- Cleopatra milk therapy with oxygen;

In case the championship is cancelled due to lack of snow cover, 10% of the paid accommodation amount will be retained by the hotel.

TRANSPORT

Sofia to Batak – 50 EUR per person (minimum 4 people).

Batak to Sofia – 50 EUR per person (minimum 4 people).

20 seats bus and 40 seats bus upon request for one way or for a 5-days period.

Event centre to Competition area to Event centre – 10 EUR per day per person.

Parking – 30 EUR for the whole championships or 10 EUR per day.

Deadline for application and payment is **15.12.2025**

Payment received between 16.12.2025 and 15.01.2026 will incur an additional **20%**.

Top Rent A Car Bulgaria is an official partner of the championship. For a discount code, please contact the organizers.

INSURANCE

The organizers will not be held responsible for the possible human and material damage. All participants should have an insurance and be insured for accident, illness or liability in tort.

PAYMENT

Payment details for entries, accommodation and transport:

Name: NSA-SIVEN

IBAN: BG98BPBI81701745044116

Bank: POSTBANK

BIC (Swift): BPBIBGSF

Address: Sofia, Akademik St.Mladenov 21

VISAS

You can find information about the visa regime in Bulgaria:

<http://www.mfa.bg/en/pages/109/index.html>

You can find a list of the countries which need a visa for Bulgaria:

http://www.mfa.bg/uploads/files/VisaRegime_for_foreigners_ordinary_passports_en.pdf

BULLETIN 2

WU23SOC/WMSOC/WCup1 – 2026

21-25 January – Batak-BULGARIA

OPPORTUNITIES FOR TRAINING

There will be no opportunities for training and competitions during the winter of 2026.

TERRAIN

Moderately rugged area with coniferous vegetation and open spaces situated between 1500m and 1600m above sea level.

MAPS

All maps are A4 size (21 x 30 cm) with a 5 m contours interval.

Map scale:

Sprint	1:5000	5 m
Middle	1:10000	5 m
Long	1:15000	5 m

PRELIMINARY COURSE INFORMATION

Winning times are according the IOF rules.

World Cup – men/women	
Sprint	10-15min
Middle	40-45min
Long	85-95min

Sprint distance winning times WMSOC should be about 20 minutes.

Middle distance winning times WMSOC should be 30-40 minutes.

Long distance WMSOC:

W35	60	M35	60
W40	60	M40	60
W45	60	M45	60
W50	60	M50	60
W55	60	M55	60
W60	60	M60	60
W65	50	M65	50
W70	45	M70	45
W75	45	M75	45
W80	45	M80	45
W85	45	M85	45

PUNCHING SYSTEM

SPORT Ident AIR+ punching system will be used (SIAC).

The organizers will provide Si-cards for all competitors who need – 15 EUR rent for the whole championships.

BULLETIN 2

WU23SOC/WMSOC/WCup1 – 2026

21-25 January – Batak-BULGARIA

WEATHER INFORMATION

<https://weather.sinoptik.bg/batak-bulgaria-100733433/14-days>

MEDIA

We welcome all media representatives. Media representatives can receive information using the e-mail address: ski-o2026@abv.bg

We are ready to arrange accommodation for journalists according to their wishes. Media centre will be located in Event Centre and Finish area.

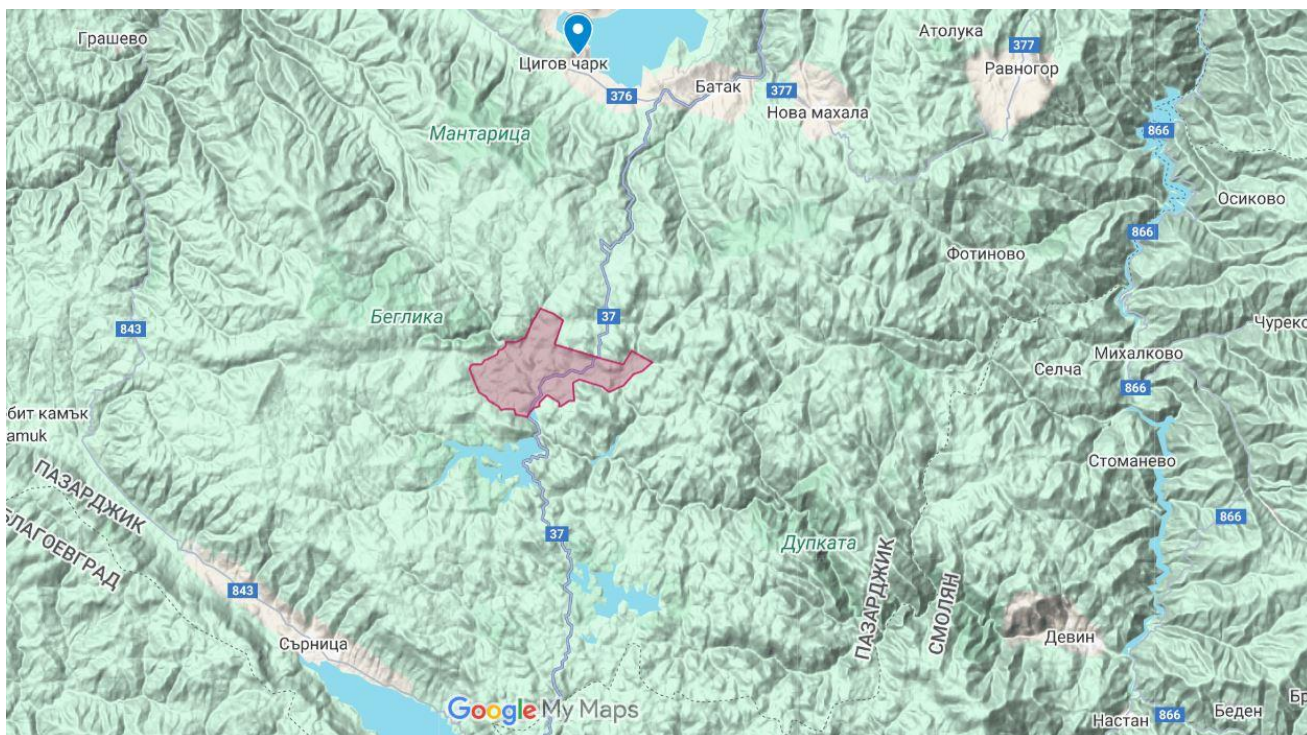
Contact person: **Ilian Todorov**

E-mail: iliant@abv.bg

Phone: +359 887568353

EMBARGOED AREAS

You can see a [detailed map](#) of the embargoed area.



BULLETIN 2

WU23SOC/WMSOC/WCup1 – 2026

21-25 January – Batak-BULGARIA

PREVIOUS MAPS OF THE EMBARGOED AREAS

